



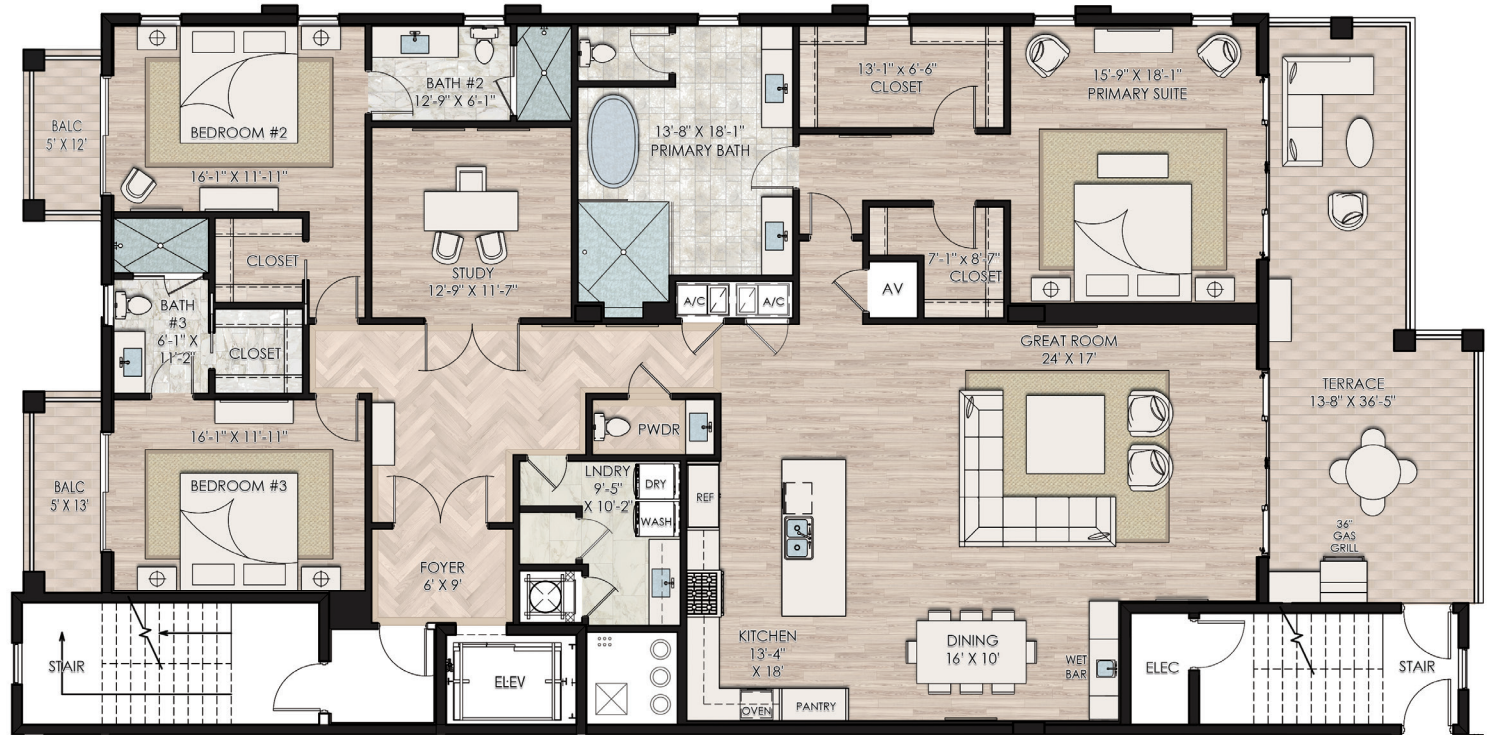
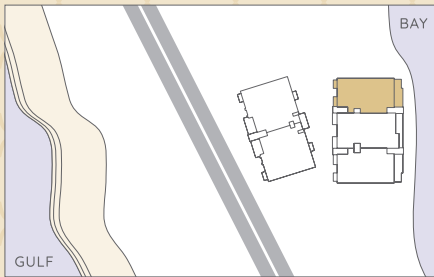
PARK PLACE

ON GULF SHORE

RESIDENCE 203 EAST BUILDING


3 BED | 3½ BATH + STUDY

A/C Living Area	3,175 sq. ft.
Terrace	389 sq. ft.
Balconies	119 sq. ft.
Total	3,683 sq. ft.



Sales Center: 850 5th Avenue South, Suite C, Naples, FL 34102 | ParkPlaceNaples.com

Karl Faerber - 239-248-1961 | Andrew Christopher - 239-821-3560 | Madleine Porter - 239-529-7747

 ORAL REPRESENTATIONS CANNOT BE RELIED UPON AS CORRECTLY STATING THE REPRESENTATIONS OF THE DEVELOPER. FOR CORRECT REPRESENTATIONS, MAKE REFERENCE TO THIS BROCHURE AND TO THE DOCUMENTS REQUIRED BY SECTION 718.503, FLORIDA STATUTES, TO BE FURNISHED BY A DEVELOPER TO A BUYER OR LESSEE. THIS IS NOT INTENDED TO BE AN OFFER TO SELL, OR SOLICITATION TO BUY, CONDOMINIUM UNITS TO RESIDENTS OF ANY JURISDICTION WHERE SUCH OFFER OR SOLICITATION CANNOT BE MADE OR ARE OTHERWISE PROHIBITED BY LAW, AND YOUR ELIGIBILITY FOR PURCHASE WILL DEPEND UPON YOUR STATE OF RESIDENCY. THIS OFFERING IS MADE ONLY BY THE PROSPECTUS FOR THE CONDOMINIUM AND NO STATEMENT SHOULD BE RELIED UPON IF NOT MADE IN THE PROSPECTUS. THE INFORMATION PROVIDED, INCLUDING PRICING, IS SOLELY FOR INFORMATIONAL PURPOSES, AND IS SUBJECT TO CHANGE WITHOUT NOTICE. All depictions of matters of detail shown hereon, including, without limitation, counters, fixtures, appliances and other items of finish, furniture and decoration, are conceptual only and are not necessarily included in the unit. For a correct representation of the items included in the unit, see the purchase agreement. Stated dimensions shown hereon are approximate and are measured to the exterior face of exterior walls and to the center line of demising walls. This method of measurement varies from, and is larger than, the dimensions that would be determined by using the description and definition of the "unit" set forth in the declaration. The unit boundaries, as described in the declaration, are defined in such a manner so that all components of the building which are (or are potentially) utilized either by other units or the common elements are excluded from the unit. For your reference, the area of the unit, determined in accordance with those defined unit boundaries, is set forth in Section 3.2 of the Declaration. Note that the unique way of defining the boundaries actually makes the unit appear to be smaller than it actually would be if standard architectural measuring techniques were used. Measurements of rooms set forth on any floor plan are generally taken at the greatest points of each given room (as if the room were a perfect rectangle), without regard for any cutouts. Accordingly, the area of the actual room will typically be smaller than the product obtained by multiplying the stated length times width. All dimensions are approximate and may vary with actual construction and all floor plans and development plans are subject to change.

